



# the LIST help bulletin. PDF LIST documents

6 June 2009

## Background

Previously folio plans, schedule of easements and survey notes were delivered via the LIST as an image in “gif” format for each separate page of the document type as either an A4/A3 draft or full resolution. This had some drawbacks as each document type can contain 1 to many individual pages requiring each individual page to be opened and printed separately. Also due to limitations with some older versions of web browsers full resolution images were not always able to be supplied leading to poor quality images being printed.

## The way forward

The LIST will soon provide an option to open and save these document types as a PDF image. This option will enable the user to open the document type as a PDF that will contain all the individual pages at either A4 or A3 full resolution format as well as still providing the option to open them as an A4 or A3 “gif” image, page by page, as at present. The only change to the “gif” images is that we will remove the option of Draft images as most current versions of web browsers will display the full resolution images.

## Advantages

- By always providing full resolution images, clearer plans are able to be printed
- By having all the pages of a document type combined together as a PDF the complete document can be printed or saved as 1 document.
- PDF viewers can easily enlarge parts of the plan allowing the user to print enlargements.
- For document types with more than one page the PDF will contain “bookmarks” which will allow the user to easily view each page.


## How it works


When the documents come up on the “Documents Table of Contents Page” there will be an option to select the entire document type as an A4 or A3 PDF as well as each page of the document as a “gif” image.


**Document Table Of Contents for Plan 145685**


This Plan does not have an associated Title.

**Folio Plan 145685 Complete Document as PDF**  
 [A4 Full Resolution](#)  
[A3 Full Resolution](#)

**Folio Plan 145685 Page 1**  
 [A4 Full Resolution](#)  
[A3 Full Resolution](#)

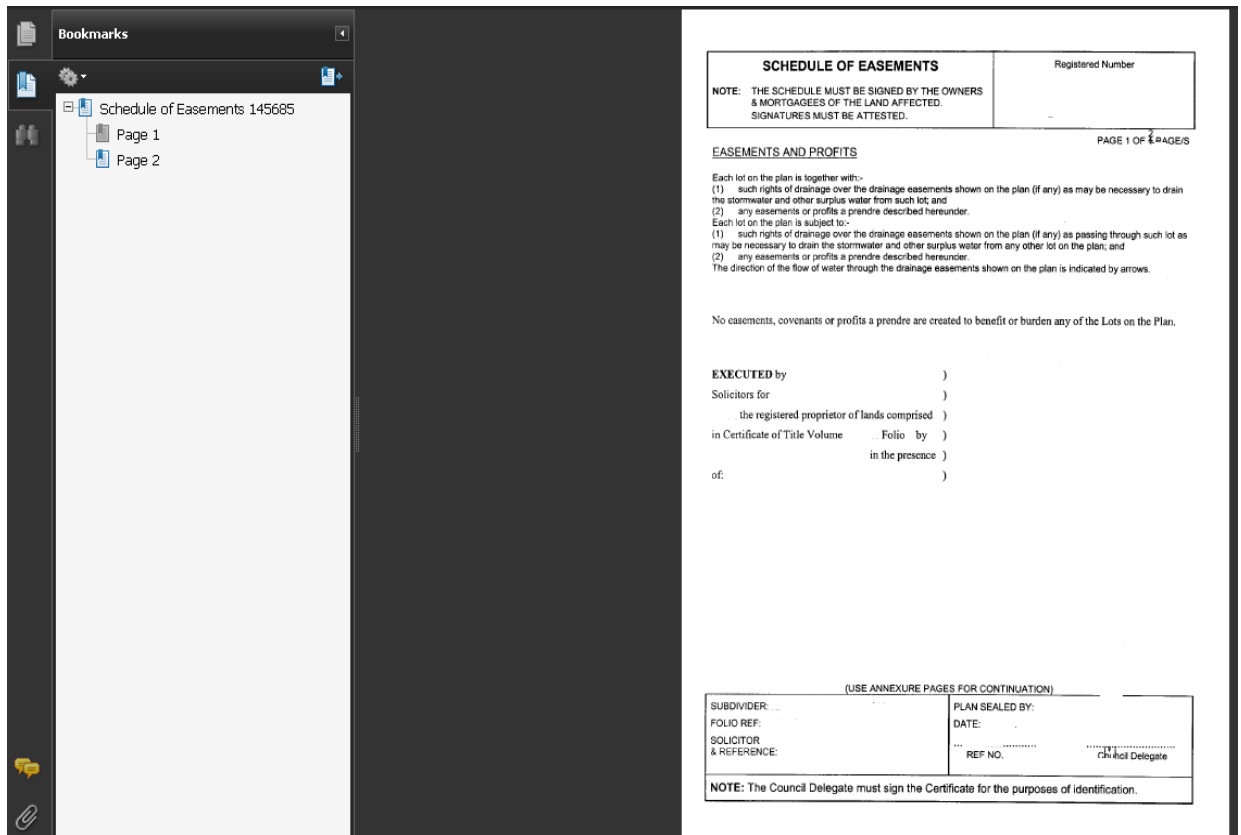
**Schedule of Easements 145685 Complete Document as PDF**  
 [A4 Full Resolution](#)  
[A3 Full Resolution](#)

**Schedule of Easements 145685 Page 1**  
 [A4 Full Resolution](#)  
[A3 Full Resolution](#)

**Schedule of Easements 145685 Page 2**  
 [A4 Full Resolution](#)  
[A3 Full Resolution](#)

**Note:** For optimum results you will require Firefox, Internet Explorer v6.0+ or Netscape v7.0+.

To open the document type as a PDF (you must have a current version of a PDF viewer installed on your computer) select either the A4 or A3 PDF option and the entire document will open in your PDF viewer.



**SCHEDULE OF EASEMENTS** Registered Number

**NOTE:** THE SCHEDULE MUST BE SIGNED BY THE OWNERS & MORTGAGEES OF THE LAND AFFECTED. SIGNATURES MUST BE ATTESTED.

PAGE 1 OF 2 PAGE/S

**EASEMENTS AND PROFITS**

Each lot on the plan is together with-

- (1) such rights of drainage over the drainage easements shown on the plan (if any) as may be necessary to drain the stormwater and other surplus water from such lot; and
- (2) any easements or profits a prandre described hereunder.

Each lot on the plan is subject to-

- (1) such rights of drainage over the drainage easements shown on the plan (if any) as passing through such lot as may be necessary to drain the stormwater and other surplus water from any other lot on the plan; and
- (2) any easements or profits a prandre described hereunder.

The direction of the flow of water through the drainage easements shown on the plan is indicated by arrows.

No easements, covenants or profits a prandre are created to benefit or burden any of the Lots on the Plan.

**EXECUTED by** \_\_\_\_\_ )  
 Solicitors for \_\_\_\_\_ )  
 the registered proprietor of lands comprised \_\_\_\_\_ )  
 in Certificate of Title Volume \_\_\_\_\_ Folio by \_\_\_\_\_ )  
 in the presence \_\_\_\_\_ )  
 of: \_\_\_\_\_ )

(USE ANNEXURE PAGES FOR CONTINUATION)

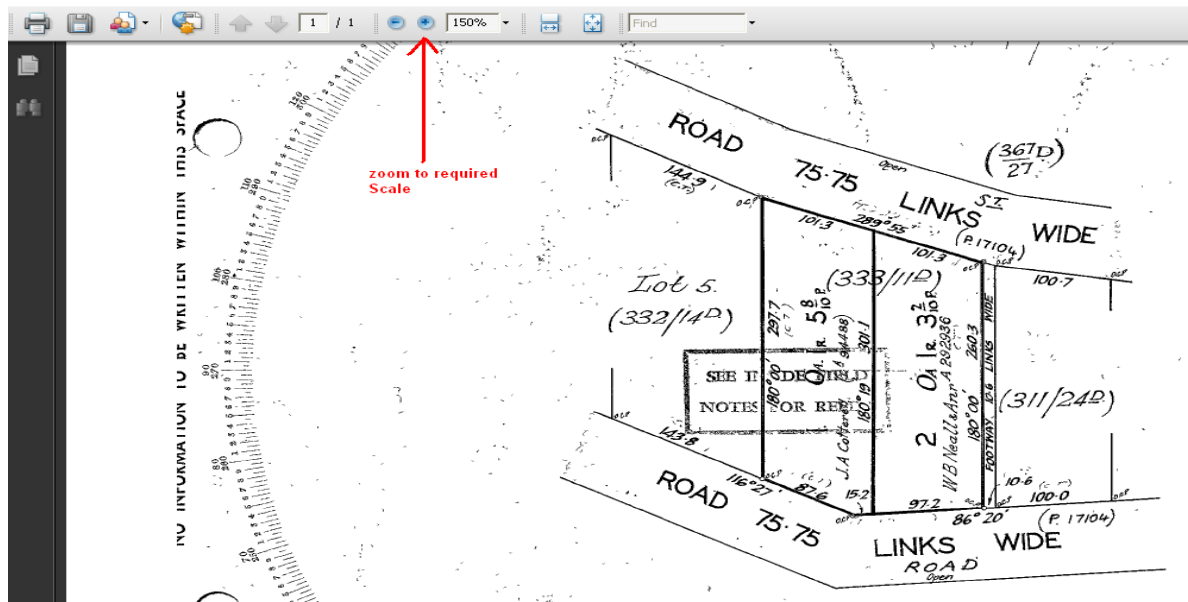
SUBDIVIDER: _____	PLAN SEALED BY: _____
FOLIO REF: _____	DATE: _____
SOLICITOR & REFERENCE: _____	REF NO. _____ Council Delegate

**NOTE:** The Council Delegate must sign the Certificate for the purposes of identification.

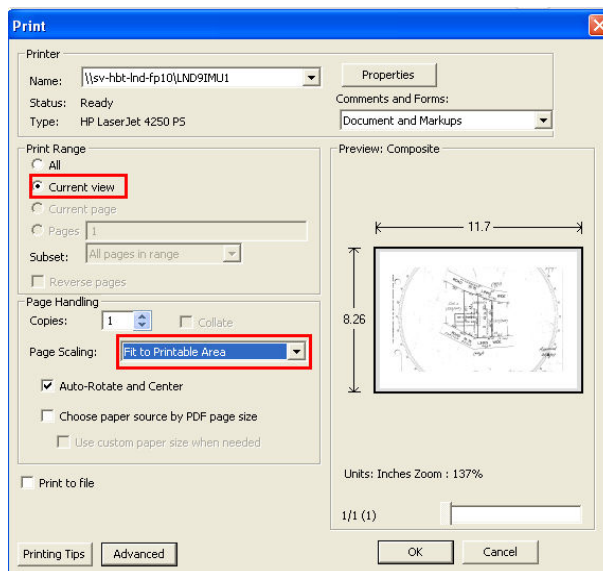
You can now print or save the entire document. To view different pages on your screen, select the page number link within the bookmarks section on the left of the page. To select the remaining document types use the back arrow in the browser toolbar.

### Enlargements

To enlarge a section of the PDF document select the zoom function within your PDF viewer until you have the section at the required enlargement scale.



Then select the File/Print option from your web Browser and set the print range to “Current View” and the “Page Handling” to “Fit to Printable Area” (note: these settings may vary with different web browsers and versions). Then select OK or print.



### What you will need to make maximum use of the new options

- To be able to use the PDF option you will need a current version of a PDF viewer (Adobe Acrobat or Similar)
- To view the full resolution “gif” images you will require Firefox (all versions), Internet Explorer v6.0+ or Netscape v7.0+ or a current versions of other web browsers



Department of Primary Industries and Water

**LIST HELP DESK**

Ph 03 6233 2465

Fax 03 6233 6568

Email: [listhelp@dpiw.tas.gov.au](mailto:listhelp@dpiw.tas.gov.au)

Web [www.thelist.tas.gov.au](http://www.thelist.tas.gov.au)