



the LIST help bulletin. Boundary Segments Layer on LISTmap

15 Sept. 2009

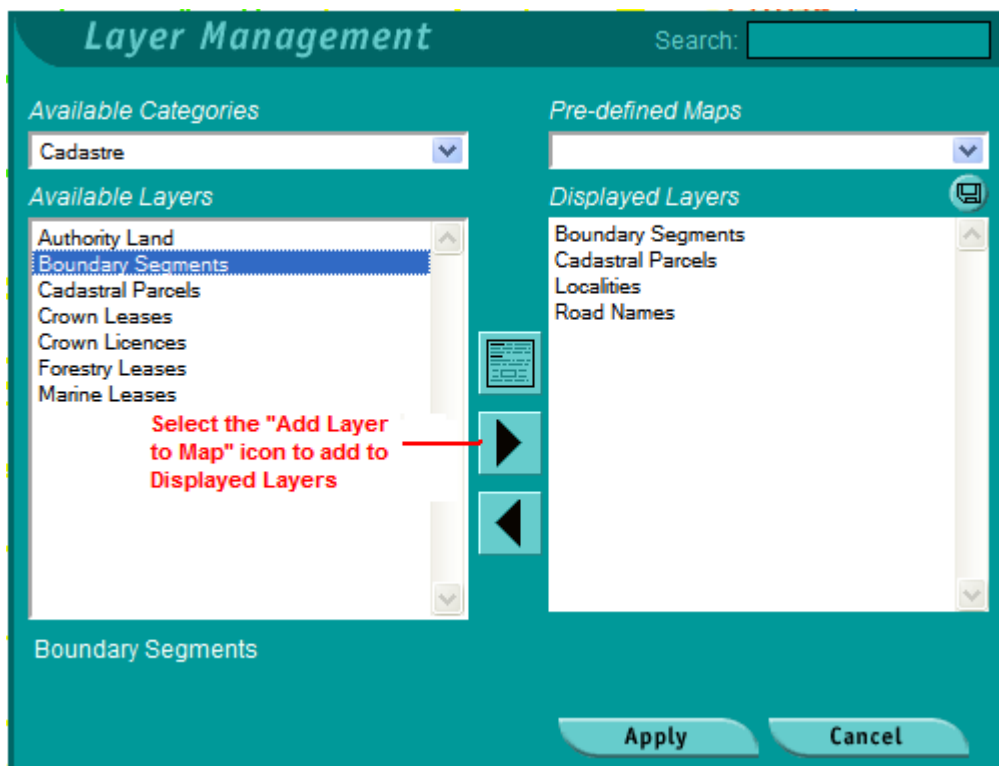
Description

Boundary Segments have now been added as a layer to LISTmap under the "Land Use and Administration - Cadastre" category. The Boundary Segments are the spatial mapping of all cadastral boundaries within Tasmania. Each boundary's spatial accuracy varies depending on its source, which is attributed to each feature. The lines were initially derived from 1:5,000 and 1:25,000 mapping data, but have been progressively upgraded over the last 10 years by the addition of new co-ordinated subdivisions and other spatial upgrade projects. To aid the user, features have been symbolised by colours into ranges indicating the level of accuracy.

This sheet is prepared to assist you to use this dataset.

Access

To access this layer, from the "Layer Management" dialog box, select the "Land Use and Administration - Cadastre" category and then add "Boundary Segments" to the displayed layers as shown below



Once the layer is displayed you can retrieve accuracy information from the segments by

1. Selecting the Boundary Segment layer from the Layer tab to the right of the page so it is highlighted in yellow
2. Select the Information tool from the Toolbar on the left of the page.
3. select the Boundary segment you wish to request information from.
4. The accuracy statement will then be displayed in the Information panel at the bottom of the page

These steps are shown below

The screenshot shows the LISTmap interface with a cadastral map. The 'Boundary Segments' layer is selected and highlighted in yellow in the legend. Three red arrows point to specific actions: 1. Select Boundary Segment layer, 2. Select Information Tool, and 3. Select Boundary Segment to request information. The information panel at the bottom displays the following data:

| Boundary Segments | |
|---------------------|--|
| Horizontal Accuracy | 1m |
| Data Source | Accurate Replot Data |
| UFI | cad007905915 |
| Note | This information is provided for general guidance only. The line accuracy stated indicates the accuracy quoted in the source data and is not guaranteed by DPiPWE. Corner positions are not authoritative and users must not rely on this data for the on-ground location of boundaries. |

Attributes associated with Boundary Segments

Attributes displayed for each feature on LISTmap are:

Horizontal Accuracy - this is the absolute positional uncertainty of the line in the cadastre
Data Source (maintained as the FEAT_FOL attribute in the data management system) - This indicates the feature or source of the information used to create the line.

- "Co-Ordinated Survey Data" lines are of the greatest order of accuracy and are positioned at survey level accuracy as defined by the surveyor. These are coloured dark green and have a Horizontal positional accuracy better than 1 metre.
- "Coordinated Replot" refers to areas of full adjustment using mathematical adjustment techniques and these are accurate to within 1m of true position. "Accurate Replot" boundaries have been replotted to within 1 metre of true position. These are coloured a light green and have a horizontal positional accuracy of up to and including 1 metre.
- Sources with a prefix of "TMP" refer to original map sheet derived boundaries and those with "Not Applicable" refer to boundaries subsequently amended or added to the cadastre. These may be coloured yellow or purple depending on accuracy

UFI - This represents the Unique Feature Identifier, a unique system generated identifier for every feature within the LIST datasets.

A summary of the symbology for these features is as follows:

Dark Green - **Co-ordinated Data** (<1m horizontal accuracy)

Light Green - **Accurate Replot** (1m horizontal accuracy)

Yellow - derived from **1:5000 Map Source** (>1m and <=5m horizontal accuracy)

Purple - derived from **1:25000 Map Source** (>5m horizontal accuracy)

Warnings when using this information

Users should be aware that this information is for general guidance and is not guaranteed. Users should not use co-ordinates derived from LISTMAP for the on-ground location of boundaries. Users also need to be aware that other LIST layers including aerial imagery may not have the same level of positional accuracy which may give the illusion of a discrepancy.

Further Information

Further information describing the data can be obtained from the metadata statement at

<http://www.thelist.tas.gov.au/asdd/ANZTA0005000028.html>

Comprehensive LISTmap help files can be found at

<http://www.thelist.tas.gov.au/listmap/listmaptutorials.jsp>

or by contacting the LIST help desk, details below